

# SUMTER TOWNSHIP

Each township has six files containing six sections in each, and one file containing all 36 sections.

Sumter01to06.pdf  
Sumter07to12.pdf  
Sumter13to18.pdf  
Sumter19to24.pdf  
Sumter25to30.pdf  
Sumter31to36.pdf  
SumterAll36.pdf

The points are listed starting with the point above the SE corner and continuing in a counter-clockwise rotation around the section. This normally begins with the East point, Northeast, then North, but may also include Witness Corners, and/or Meander Corners.

## **Definitions**

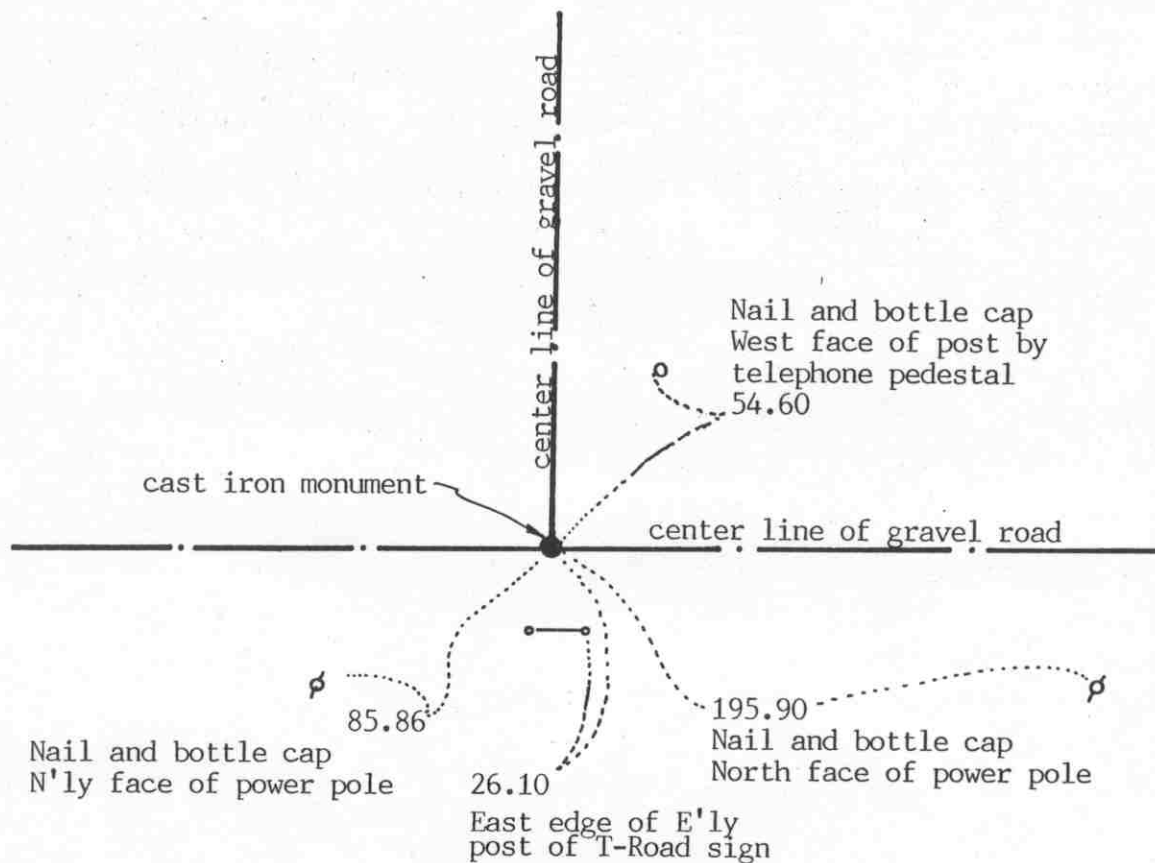
**Witness Corner:** A witness corner “stands in” when the true corner cannot be monumented or occupied because of difficult terrain or obstruction of the corner sight. The witness corner must be on the section line and is usually 5 or 10 chains away from the true corner.

**Meander Corner:** The intersection of a township, range, or section line and the banks of a navigable stream or meandering body of water.

EAST QUARTER corner, Section 1, Township 115 North, Range 29 West

# Certificate of Location of Government Corner

SKETCH OF REFERENCE TIES  
(NO SCALE)



SECTION 1 T. 115 R. 29

SECTION 6 T. 115 R. 28

Statement of evidence relative to this corner location on sheet 2

I hereby certify that this document was prepared by me or under my direct supervision.

Willard Pellinen

Willard Pellinen  
McLeod County Surveyor  
License No. 9626

Date 2/23/93

OFFICE OF THE COUNTY RECORDER  
MCLEOD COUNTY, MINNESOTA.

I hereby certify that this document was filed in this office at 9 o'clock A.M. on the 4th day of March, 1993.

Armen H. Mulder, County Recorder

By \_\_\_\_\_, Deputy

Document No. 250779

EAST QUARTER corner, Section 1, Township 115 North, Range 29 West*Certificate of Location of Government Corner*

July, 1855. John Ryan of the General Land Office established this corner. He set post, in a wet marsh, deposited charcoal, built mound and pit 8 links east.

August 27, 1970. McCombs Knutson Associates (Dickman Knutson, McLeod County Surveyor) found an iron pin at the intersection of road east-west-north. Knutson replaced the iron pin with a McLeod County cast iron monument and took reference ties.

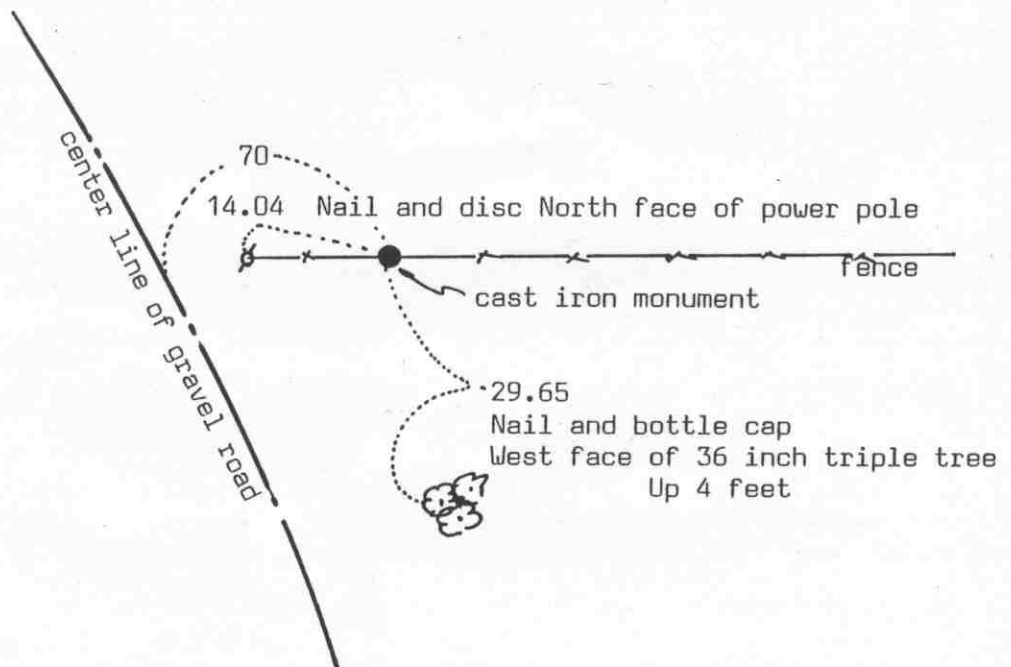
February 5, 1993. We found the monument in good condition down 6 inches below the road surface and took new reference ties.

The monument set by Knutson is accepted as marking the location of the quarter corner. It fits long standing occupation lines, the road center lines and it perpetuates the location of an older monument.

NORTHEAST corner, Section 1, Township 115 North, Range 29 West

# Certificate of Location of Government Corner

## SKETCH OF REFERENCE TIES (NO SCALE)

SECTION 36  
T. 116 R. 29SECTION 31  
T. 116 R. 28SECTION 1  
T. 115 R. 29SECTION 6  
T. 115 R. 28

Statement of evidence relative to this corner location on sheet 2

I hereby certify that this document  
was prepared by me or under my  
direct supervision.

Willard Pellinen

Willard Pellinen  
McLeod County Surveyor  
License No. 9626

Date March 19, 1993

## OFFICE OF THE COUNTY RECORDER MCLEOD COUNTY, MINNESOTA.

I hereby certify that this document was filed in this  
office at 4 o'clock P. M. on the 27th day  
of July, 1993.

Carmen Ostlie Mulder, County Recorder

By \_\_\_\_\_, Deputy

Document No. 253813

NORTHEAST corner, Section 1, Township 115 North, Range 29 West*Certificate of Location of Government Corner*

1855. This corner was originally established by John Ryan of the General Land Office. He set a post and marked an oak for a bearing tree.

September, 1969. Clarence Ondrachek, in the Northeast Quarter of Section 1, said there is an iron at the corner, near an iron post. Dickman Knutson, county surveyor, found iron rod beside an iron post and replaced it with a McLeod County cast iron monument. He took available reference ties.

February 5, 1993. We found no ties remaining. We found the monument in good condition along the east-west fence, and took new reference ties.

The monument set by Knutson is accepted as marking the correct location of the section corner. It fits long standing occupation lines and it replaces an older monument which had been accepted by adjoining land owners as the section corner.

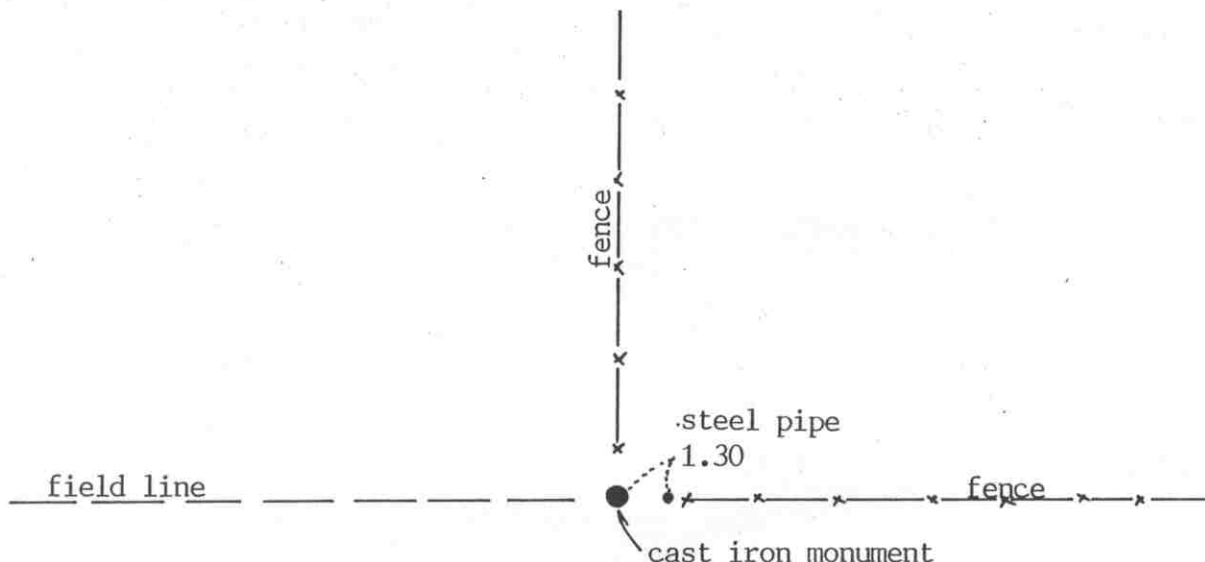
NORTH QUARTER corner, Section 1, Township 115 North, Range 29 West

# Certificate of Location of Government Corner

## SKETCH OF REFERENCE TIES

(NO SCALE)

SECTION 36 T. 116 R. 29



SECTION 1, T. 115 R. 29

Statement of evidence relative to this corner location on sheet 2

I hereby certify that this document was prepared by me or under my direct supervision.

Willard Pellinen

Willard Pellinen  
McLeod County Surveyor  
License No. 9626

Date Feb. 23, 1993

OFFICE OF THE COUNTY RECORDER  
MCLEOD COUNTY, MINNESOTA.

I hereby certify that this document was filed in this office at 9 o'clock A.M. on the 9th day of March, 19 93.

Armenia St. Lie N. Quader County Recorder

By \_\_\_\_\_, Deputy

Document No. 250780

NORTH QUARTER corner, Section 1, Township 115 North, Range 29 West

## *Certificate of Location of Government Corner*

July, 1855. This corner was originally established by John Ryan of the General Land Office. He set a post, deposited charcoal, dug pits and trench, built mound and planted osage orange seeds at the corners of the mound.

September 10, 1969. McCombs Knutson Associates (Dickman Knutson, county surveyor) found a stone at the fence intersection. Fences north, east and west. Mr. Oliver Brecht, who had lived in the Southwest Quarter of Section 36 for 32 years, testified this was the correct location of the quarter corner. Knutson replaced the stone with a McLeod County cast iron monument and took available reference ties.

The monument is accepted as marking the quarter corner. It fits long standing occupation lines, the fences and has been accepted by adjoining land owners as the quarter corner.

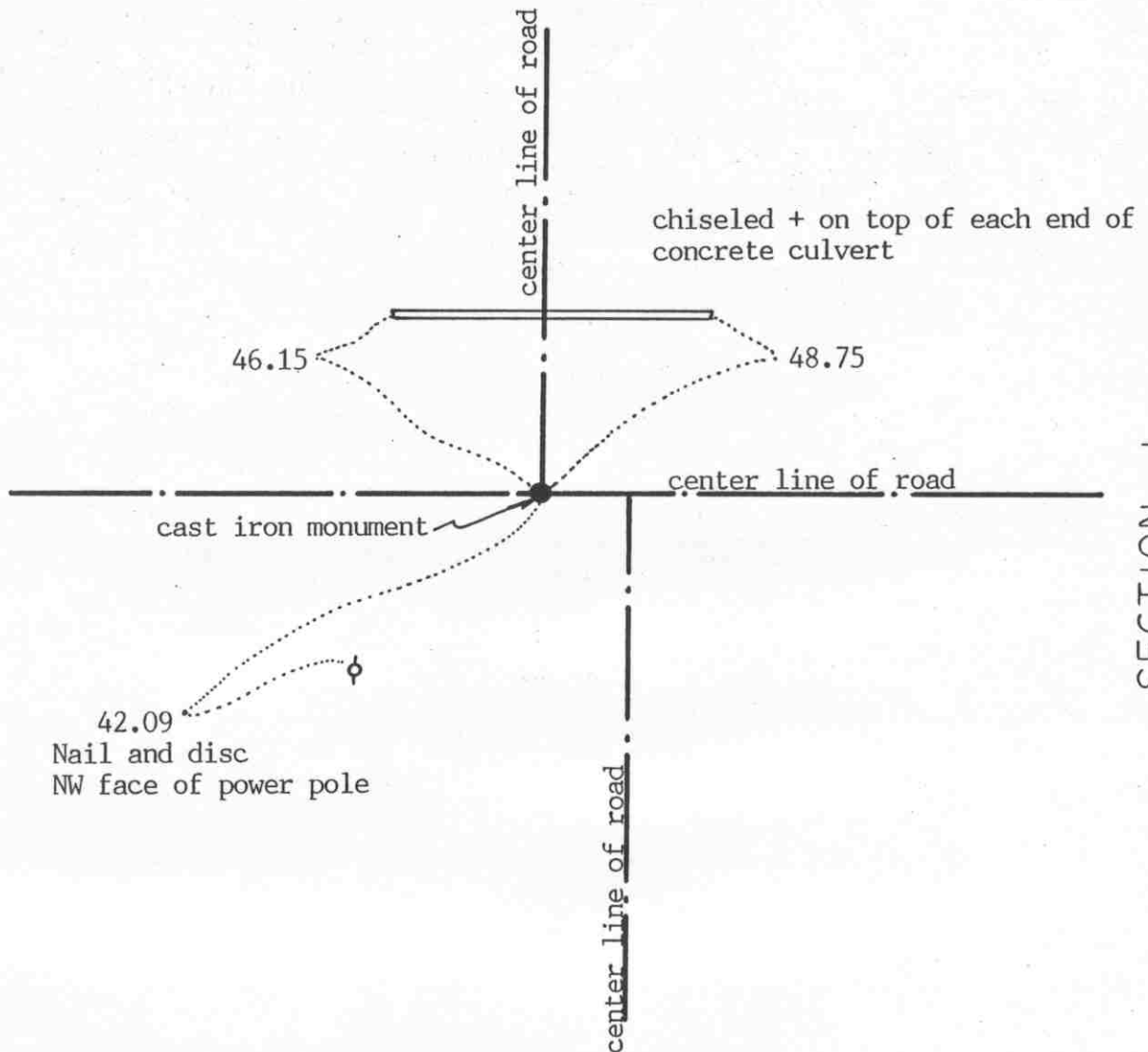
February 10, 1993. We found the monument in good condition and checked the ties.

EAST QUARTER corner, Section 2, Township 115 North, Range 29 West

# Certificate of Location of Government Corner

## SKETCH OF REFERENCE TIES

(NO SCALE)



Statement of evidence relative to this corner location on sheet 2

I hereby certify that this document was prepared by me or under my direct supervision.

Willard Pellinen

Willard Pellinen  
McLeod County Surveyor  
License No. 9626

Date Feb. 22, 1993

OFFICE OF THE COUNTY RECORDER  
MCLEOD COUNTY, MINNESOTA.

I hereby certify that this document was filed in this office at 9 o'clock A.M. on the 4th day of March, 19 93.

Carmen Katie Mulder, County Recorder

By \_\_\_\_\_, Deputy

Document No. 250781



EAST QUARTER corner, Section 2, Township 115 North, Range 29 West

## *Certificate of Location of Government Corner*

September, 1856. Denis L. Langton of the General Land Office established this corner. He set a post in a mound of earth, drove charred stake and planted locust seeds at the corners of the mound.

December, 1939. McLeod County Highway Department field notes show an iron pin at the corner.

August 6, 1974. Dickman Knutson, McLeod County Surveyor, found an iron pin down 2 feet below the road surface and set a McLeod County cast iron monument over it and took reference ties. This was on the center line intersection of roads east-west and north.

February 5, 1993. We found the monument in good condition and checked the reference ties. This monument is 7.4 feet north and 2.6 feet east of a lost position for the corner.

The monument set by Knutson is accepted as marking the location of the quarter corner. It perpetuates the location of an older monument and it fits the occupation lines, the center lines of the roads.

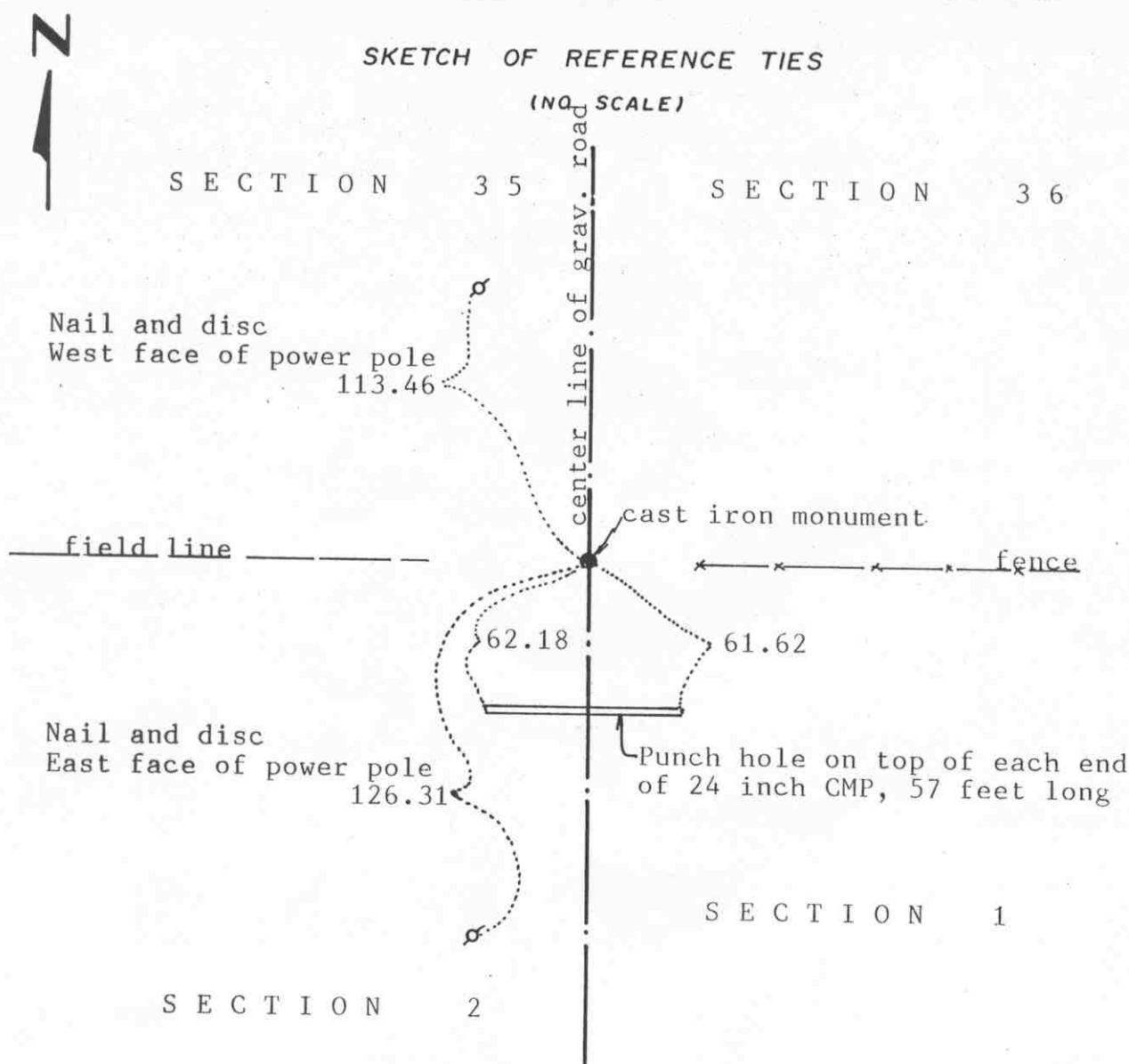
NORTHEAST

Sheet 1 of 2 sheetscorner, Section 2, Township 115 North, Range 29 West

## Certificate of Location of Government Corner

## SKETCH OF REFERENCE TIES

(NO SCALE)

Statement of evidence relative to this corner location on sheet 2

I hereby certify that this document was prepared by me or under my direct supervision.

Willard Pellinen

Willard Pellinen  
McLeod County Surveyor  
License No. 9626

Date Oct. 8, 1991

OFFICE OF THE COUNTY RECORDER  
MCLEOD COUNTY, MINNESOTA.

I hereby certify that this document was filed in this office at 1 o'clock P.M. on the 21st day of Oct, 1991.

Armen Ottilie, County Recorder

By \_\_\_\_\_, Deputy

Document No. 241589

NORTHEAST corner, Section 2, Township 115 North, Range 29 West

## *Certificate of Location of Government Corner*

1855. John Ryan of the General Land Office set a post, deposited charcoal, dug pits and trench, built mound and planted osage orange seeds at the corners of the mound.

August 13, 1969. McCombs Knutson Associates (Dickman Knutson, county surveyor) found a re-rod in the center line of the road, fences east and west. Re-rod was down  $1\frac{1}{2}$  feet below the surface of the road. Mr. John Bouska, in the west half of Section 36 and Mr. Charles Johnson, in the Southeast Quarter of Section 35, said this is the correct corner. Section 35 was surveyed about 35 years ago and all corners were on the center lines and all the fences were good at the section corners and  $\frac{1}{4}$  corners. Knutson set a McLeod County cast iron monument and took reference ties.

July 16, 1990. We found the monument in good condition down 8 inches below the road surface and took new reference ties.

We believe the re-rod found by Knutson had perpetuated the correct location of the section corner.

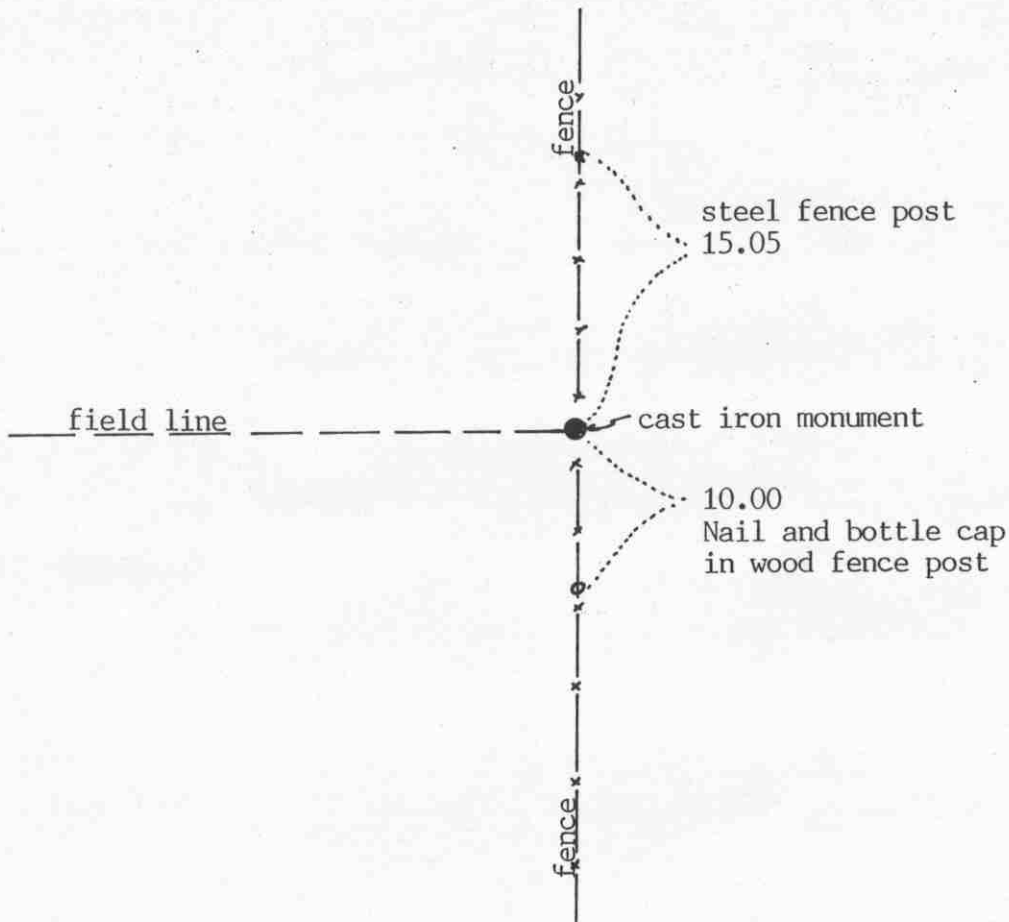
NORTH QUARTER corner, Section 2, Township 115 North, Range 29 West

# Certificate of Location of Government Corner

SKETCH OF REFERENCE TIES

(NO SCALE)

SECTION 35 T.116 R.29



SECTION 2 T.115 R.29

Statement of evidence relative to this corner location on sheet 2

I hereby certify that this document was prepared by me or under my direct supervision.

Willard Pellinen

Willard Pellinen  
McLeod County Surveyor  
License No. 9626

Date Feb. 23, 1993

OFFICE OF THE COUNTY RECORDER  
MCLEOD COUNTY, MINNESOTA.

I hereby certify that this document was filed in this office at 9 o'clock A.M. on the 4th day of March, 1993.

Carmen Stille Mader, County Recorder

By \_\_\_\_\_, Deputy

Document No. 250782

NORTH QUARTER corner, Section 2, Township 115 North, Range 29 West

## *Certificate of Location of Government Corner*

July, 1855. This corner was originally established by John Ryan of the General Land Office. He set a post, deposited charcoal, dug pits and trench, built mound and planted osage orange seeds at the corners of the mound.

August, 1969. Mr. Charles Johnson, who lives in the Southeast Quarter of Section 35 and Mr. John Boushka, who lives in Section 36, both testified the fence intersection is the quarter corner. Mr. Boushka said Section 35 was surveyed about 35 years ago and all the center lines of the roads and the fences at the quarter corners and Section corners were good. Dickman Knutson, county surveyor, set a McLeod County cast iron monument at the fence intersection and took available reference ties. The fences ran north, south, east and west from the corner. The corner is about 13 feet east of a split between the section corners.

The monument set by Knutson is accepted as marking the quarter corner. It fits long standing occupation lines, the fences, which had been accepted by adjoining land owners as being on the section and quarter lines.

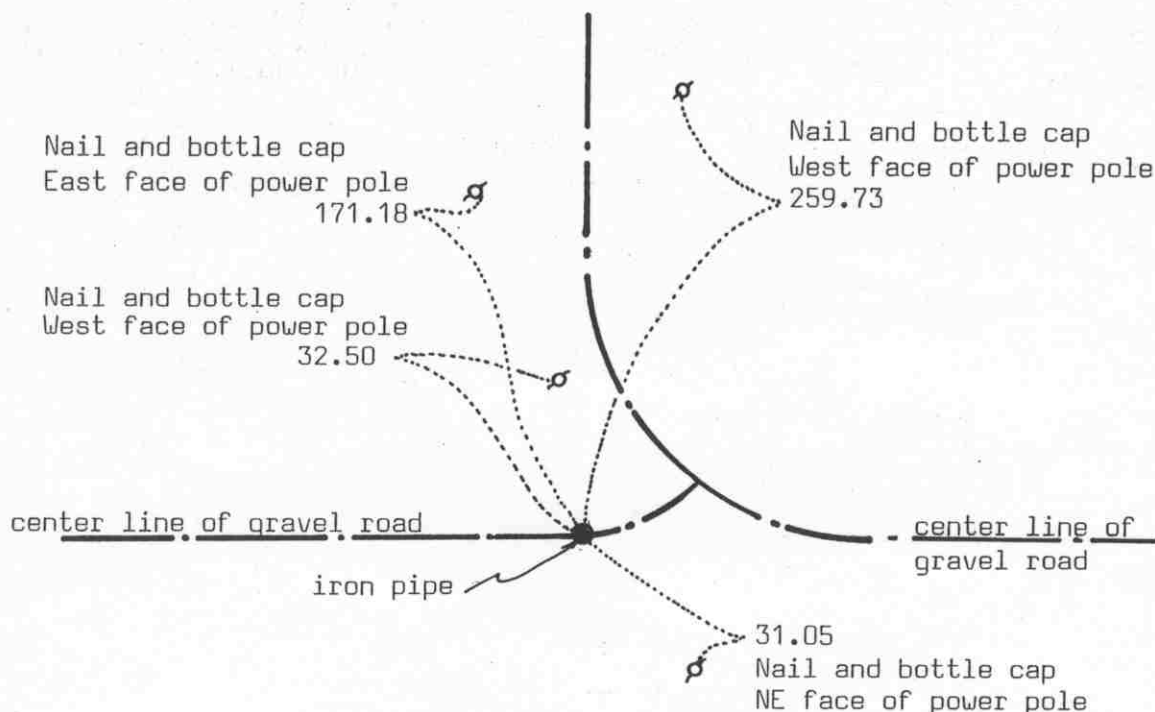
February 10, 1993. We found the monument in good condition and checked the reference ties.

EAST QUARTER corner, Section 3, Township 115 North, Range 29 West

# Certificate of Location of Government Corner

## SKETCH OF REFERENCE TIES (NO SCALE)

SECTION 3



SECTION 2

Statement of evidence relative to this corner location on sheet 2

I hereby certify that this document was prepared by me or under my direct supervision.

Willard Pellinen

Willard Pellinen  
McLeod County Surveyor  
License No. 9626

Date March 10, 1993

OFFICE OF THE COUNTY RECORDER  
MCLEOD COUNTY, MINNESOTA.

I hereby certify that this document was filed in this office at 4 o'clock P.M. on the 27th day of July, 1993.

Carmen Ottilie J. Jucker, County Recorder

By \_\_\_\_\_, Deputy

Document No. 253814

EAST QUARTER        corner, Section 3, Township 115 North, Range 29 West

## *Certificate of Location of Government Corner*

September, 1856. Denis Langton of the General Land Office set a post, raised mound, drove charred post and planted locust seeds at the corners of the mound.

December, 1939. McLeod County Highway Department set an iron pin at an assumed corner. This was 2681.5 feet from the northeast corner of Section 3.

August 6, 1974. Dickman Knutson, county surveyor, found an iron pin down 2 feet below the surface of the gravel road and set a McLeod County cast iron monument over the pin and took available reference ties.

April 26, 1979. We found the top of the monument had been broken off by road grading. We found the base of the monument still in place and set a half inch diameter iron pipe over the base.

February 10, 1993. We found the iron pipe and took new available reference ties.

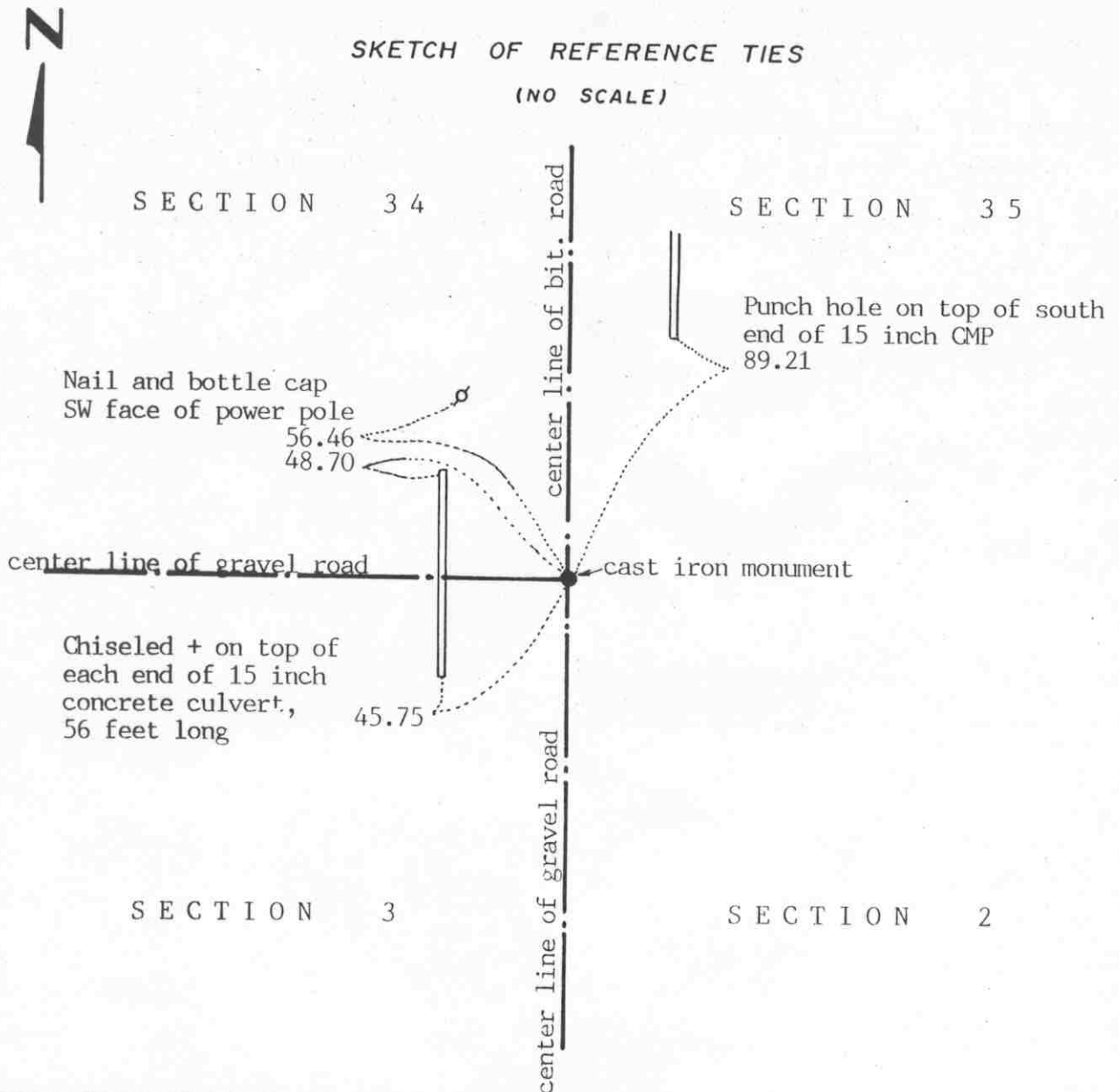
We accept the monument set by Knutson as marking the correct location of the quarter corner. It fits occupation lines, the center lines of the east-west and north roads and has been accepted as the corner since 1939.

NORTHEAST corner, Section 3, Township 115 North, Range 29 West

# Certificate of Location of Government Corner

SKETCH OF REFERENCE TIES

(NO SCALE)



Statement of evidence relative to this corner location on sheet 2

I hereby certify that this document  
was prepared by me or under my  
direct supervision.

Willard Pellinen  
Willard Pellinen  
McLeod County Surveyor  
License No. 9626

Date October 9, 1991

OFFICE OF THE COUNTY RECORDER  
MCLEOD COUNTY, MINNESOTA.

I hereby certify that this document was filed in this  
office at 1 o'clock P.M. on the 21st day  
of Oct, 1991.

Carmen Potlie, County Recorder

By \_\_\_\_\_, Deputy

Document No. 241590



NORTHEAST corner, Section 3, Township 115 North, Range 29 West

## *Certificate of Location of Government Corner*

1855. John Ryan of the General Land Office set a post, deposited charcoal, dug pits and trench, built mound and planted osage seeds at the corners of the mound.

August 13, 1969. McCombs Knutson Associates (Dickman Knutson, county surveyor) dug for the corner and found a re-rod down  $1\frac{1}{2}$  feet below the surface of the road. This was on the center line intersection of roads north, south and west. Mr. John Bouska, in the west half of Section 36 and Mr. Charles Johnson, in the Southeast Quarter of Section 35, both say this is the correct corner. They said Section 35 was surveyed about 35 years ago and all the corners were found or set and were on the center lines of the roads, or at fence intersections. Knutson set a McLeod County cast iron monument and took reference ties.

July 16, 1990. We found the monument in good condition and took new reference ties.

We believe the re-rod found by Knutson had perpetuated the correct location of the section corner.

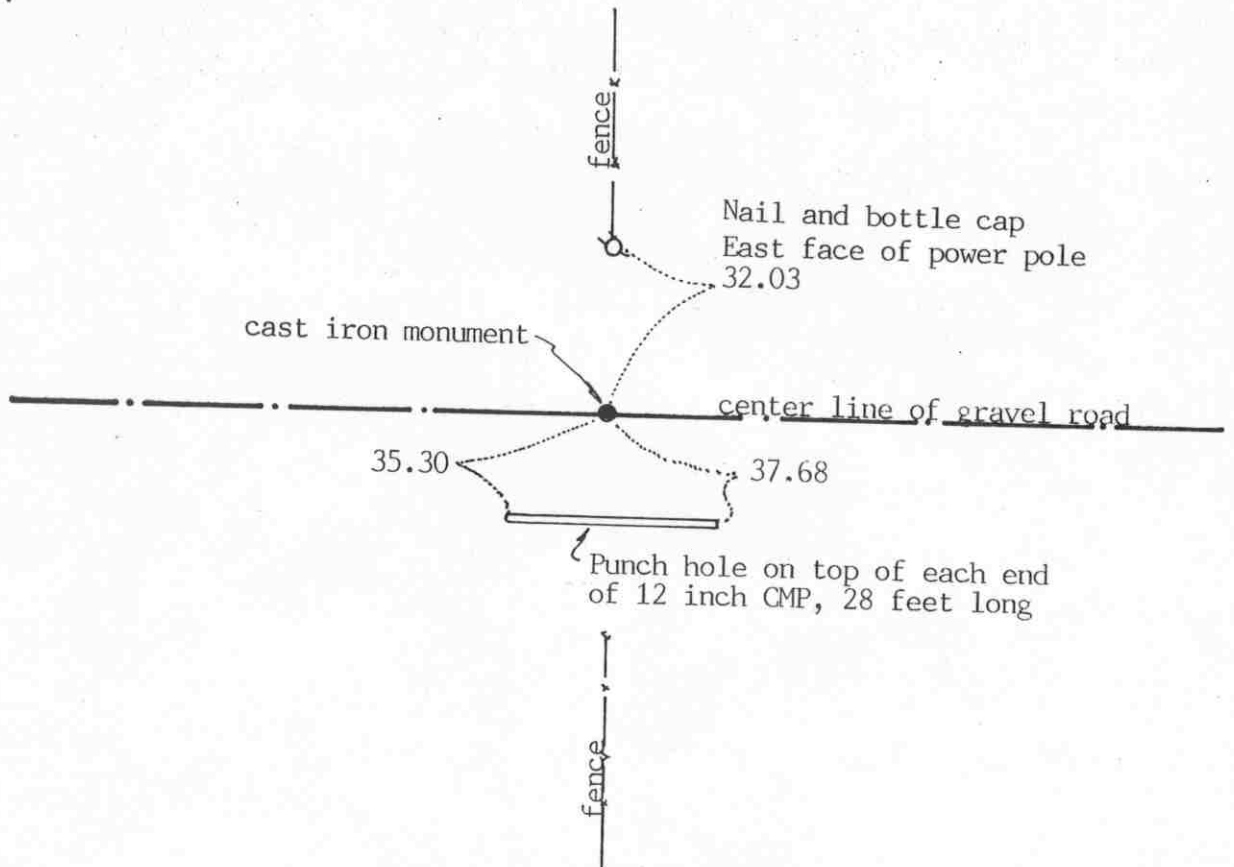
# Certificate of Location of Government Corner



## SKETCH OF REFERENCE TIES

(NO SCALE)

SECTION 3 4



SECTION 3

Statement of evidence relative to this corner location on sheet 2

I hereby certify that this document was prepared by me or under my direct supervision.

Willard Pellinen  
Willard Pellinen  
McLeod County Surveyor  
License No. 9626

Date October 13, 1991

OFFICE OF THE COUNTY RECORDER  
MCLEOD COUNTY, MINNESOTA.

I hereby certify that this document was filed in this office at 1 o'clock P.M. on the 21st day of Oct, 1991.

Armen D. Stille, County Recorder

By \_\_\_\_\_, Deputy

Document No. 241591

NORTH QUARTER corner, Section 3, Township 115 North, Range 29 West

## Certificate of Location of Government Corner

1855. John Ryan of the General Land Office set a post, deposited charcoal, dug pits and trench, built mound and planted osage orange seeds at the corners of the mound.

1954. County Highway Department field notes show the corner to be in line with a fence running north.

George Kreitlow who lives in the Northeast Quarter of Section 3 and Matt Pohlmeier, in the Southeast Quarter of Section 34 both said the corner is the center line of the east-west road on the extensions of the fences from the north and south.

September 8, 1969. McCombs Knutson Associates (Dickman Knutson, county surveyor) set a temporary corner in the center line of the road in line with the fences.

Knutson excavated for the corner but found nothing. He set a McLeod County cast iron monument on the intersection of the fences and the center line of the road and took reference ties.

July 16, 1990. We found no reference ties remaining. We dug and found the cast iron monument in good condition down 6 inches below the road surface and took new ties.

There being no evidence to the contrary, we accept the monument set by Knutson as marking the correct location of the quarter corner. It fits long standing occupation lines, the center line of the road and the fence lines, and has been accepted as the corner by the adjoining land owners.

EAST QUARTER corner, Section 4, Township 115 North, Range 29 West

# Certificate of Location of Government Corner

SKETCH OF REFERENCE TIES  
(NO SCALE)



2656.29 to northeast corner of Section 4  
2640.79 to southeast corner of Section 4.  
2655.44 to center of Section 4

On straight line between northeast and southeast corners of Sec. 4

Statement of evidence relative to this corner location on sheet 2

I hereby certify that this document  
was prepared by me or under my  
direct supervision.

Willard Pellinen

Willard Pellinen  
McLeod County Surveyor  
License No. 9626

Date April 19, 1994

OFFICE OF THE COUNTY RECORDER  
MCLEOD COUNTY, MINNESOTA.

I hereby certify that this document was filed in this  
office at 9 o'clock A.M. on the 10th day  
of May, 19 94.

Carman Ootie Mulder, County Recorder

By \_\_\_\_\_, Deputy

Document No. 259456

EAST QUARTER corner, Section 4, Township 115 North, Range 29 West*Certificate of Location of Government Corner*

September, 1856. Denis L. Langton of the General Land Office established this corner. He set a post, raised mound of earth, drove charred stake and planted locust seeds at the corners of the mound.

November, 1899. E. L. Higgins, county surveyor, found evidence of the mound but found no stake.

February 10, 1977. Elmer Peters, 77 years old and lived in the Southwest Quarter of Section 3, said the east-west fence line is the east-west quarter line of Sections 3 and 4 and has been accepted as such by adjoining land owners.

Dickman Knutson, county surveyor, set an iron pipe along the east west fence line on a straight line between the section corners.

April 11, 1978. Knutson replaced the iron pipe with a McLeod County cast iron monument and took reference ties.

January 24, 1994. We found the monument in good condition.

NORTHEAST corner, Section 4, Township 115 North, Range 29 West

# Certificate of Location of Government Corner

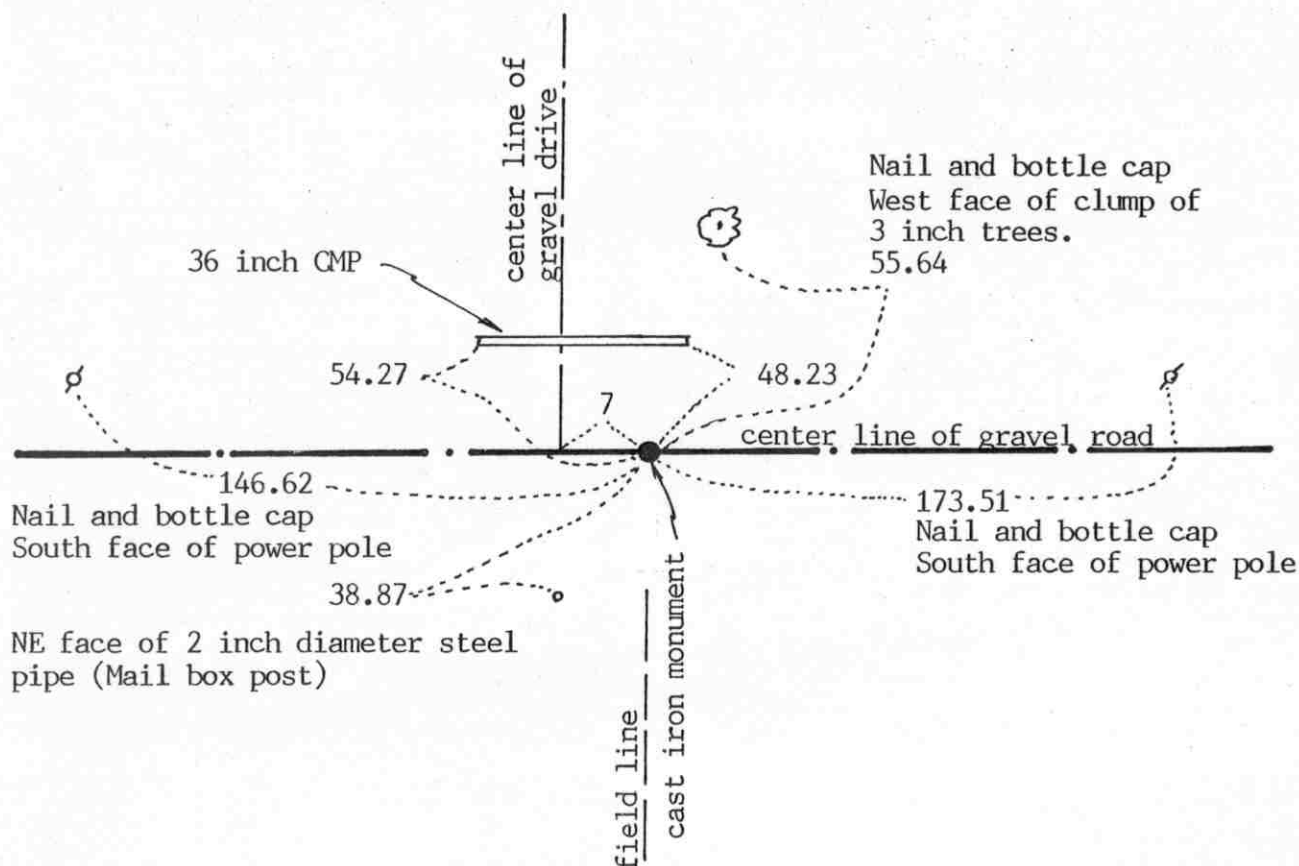
## SKETCH OF REFERENCE TIES

(NO SCALE)

SECTION 33

SECTION 34

T. 116 R. 29



T. 115 R. 29

SECTION 4

SECTION 3

Statement of evidence relative to this corner location on sheet 2

I hereby certify that this document was prepared by me or under my direct supervision.

Willard Pellinen

Willard Pellinen  
McLeod County Surveyor  
License No. 9626

Date January 27, 1994.

OFFICE OF THE COUNTY RECORDER  
MCLEOD COUNTY, MINNESOTA.

I hereby certify that this document was filed in this office at 9 o'clock A.M. on the 7th day of February, 1994.

Carmen Arthi Mulder, County Recorder

By Jan Lotrick, Deputy

Document No. 257717

NORTHEAST corner, Section 4, Township 115 North, Range 29 West

## *Certificate of Location of Government Corner*

July, 1855. This corner was originally established by the General Land Office. John Ryan set a post, deposited charcoal, dug pits and trench, built mound and planted osage orange seeds at the corners of the mound.

November, 1899. E. L. Higgins, county surveyor, had a distance of 2655.85 feet to the north quarter corner of Section 4 and 2647 feet to the north quarter corner of Section 3.

September 8, 1969. Mr. Raymond Otto, who owned the East Half of the Southeast Quarter of Section 33, testified that the driveway running north is all in Section 33.

April 16, 1970. Dickman Knutson, county surveyor, excavated for the corner, John Tupa from Hutchinson with a backhoe. They dug a hole 5 feet by 5 feet by 3 feet deep, to the east of the driveway running north. Down 3 feet they found a stone with a wood stake beside it. They took available reference ties.

Knutson set a McLeod County cast iron monument at the corner.

The monument set by Knutson is accepted as the quarter corner. It fits long standing occupation line, the center line of the east-west road and it perpetuates the location of an older monument, the stone. It also fits the location as per testimony by Mr. Otto. Our measured distances to the north quarter corner of Section 4 and to the north quarter corner of Section 3 are within a few feet of Higgins' distances.

December 21, 1993. We found the monument in good condition down 10 inches below the surface of the gravel road and took new reference ties.

NORTH QUARTER corner, Section 4, Township 115 North, Range 29 West

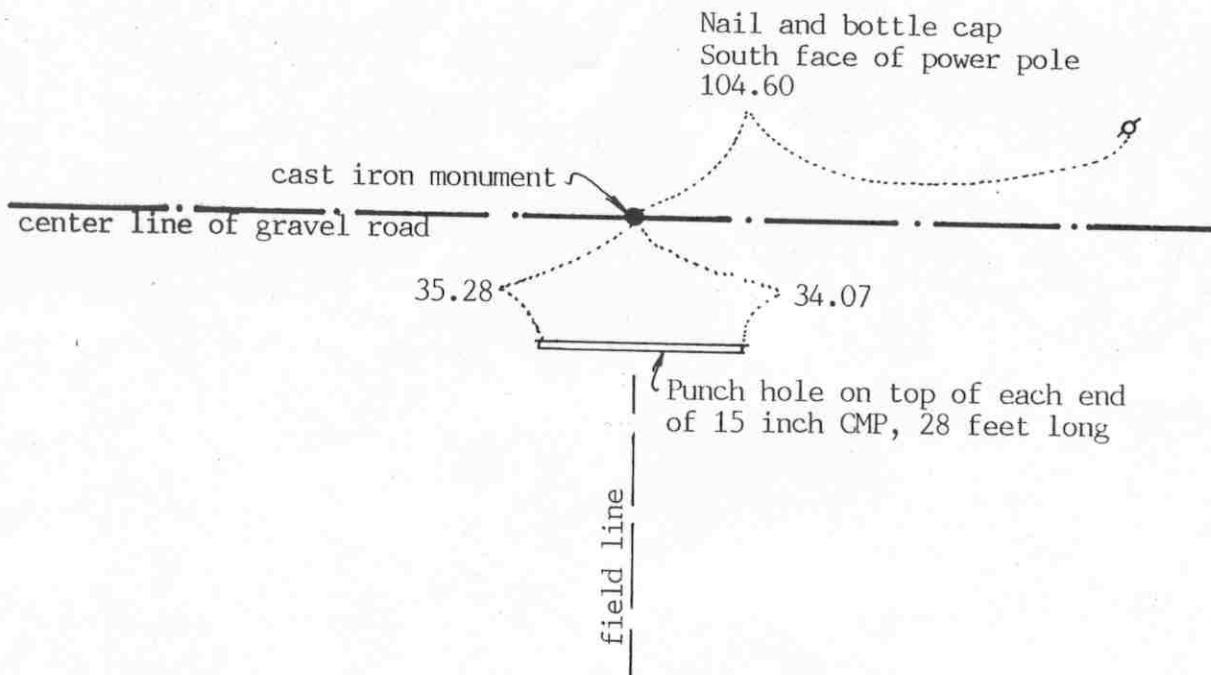
# Certificate of Location of Government Corner



SKETCH OF REFERENCE TIES

(NO SCALE)

SECTION 33



SECTION 4

Statement of evidence relative to this corner location on sheet 2

I hereby certify that this document was prepared by me or under my direct supervision.

Willard Pellinen

Willard Pellinen  
McLeod County Surveyor  
License No. 9626

Date Oct. 13, 1991

OFFICE OF THE COUNTY RECORDER  
MCLEOD COUNTY, MINNESOTA.

I hereby certify that this document was filed in this office at 1 o'clock P.M. on the 21st day of Oct, 1991.

Carmen Ostlie, County Recorder

By \_\_\_\_\_, Deputy

Document No. 241592



North Quarter corner, Section 4, Township 115 North, Range 29 West

## *Certificate of Location of Government Corner*

This corner was originally established by the government in 1855. John Ryan set a post, deposited charcoal, dug pits and trench, built mound and planted osage orange seeds at the corners of the mound.

November, 1899. E.L.Higgins, county surveyor, found an old stake at the corner. He measured 2638.5 feet to the northwest corner and 2653 feet to the northeast corner of Section 5.

September 8, 1969. McCombs Knutson Associates (Dickman Knutson, county surveyor) set a temporary quarter corner on center line of the east-west road in line with a tree line to the south.

Knutson excavated for the corner with a backhoe but found nothing.

October 26, 1970. Knutson set the quarter corner, a McLeod County cast iron monument, on the center line of the road on a proration of Higgins' 1899 distances to the northwest and the northeast corners of the section.

July 16, 1990. We found all the reference ties destroyed but found monument in good condition 3 inches below the surface of the road. We took new ties.

We measured 2641.34 feet to the northwest corner and 2655.85 feet to the northeast corner of the section.

We accept the monument set by Knutson as marking the correct location of the quarter corner. This is on a proration of the 1899 distances and is only 0.8 feet north of a straight line between the section corners.

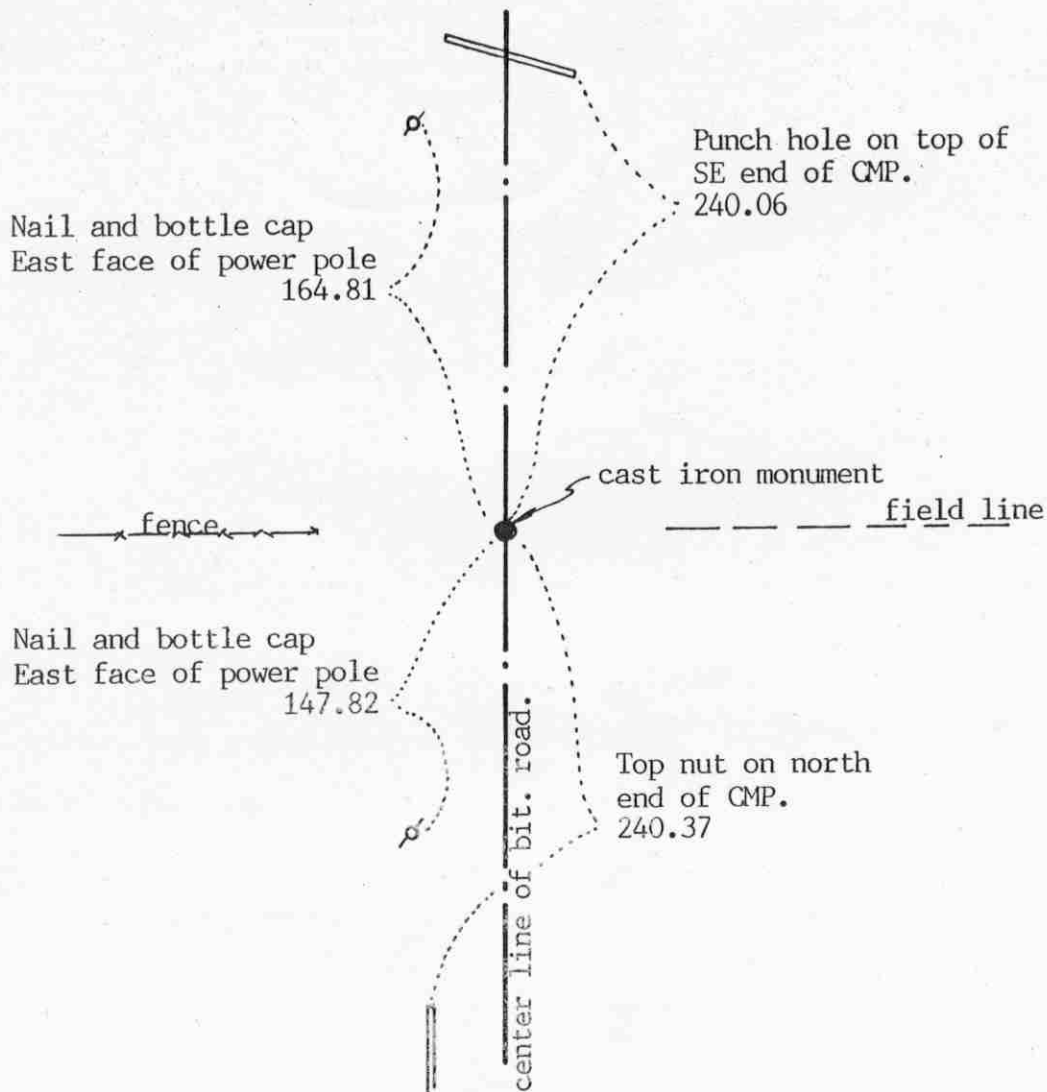
EAST QUARTER corner, Section 5, Township 115 North, Range 29 West

# Certificate of Location of Government Corner

## SKETCH OF REFERENCE TIES (NO SCALE)

SECTION 5

SECTION 4



Statement of evidence relative to this corner location on sheet 2

I hereby certify that this document was prepared by me or under my direct supervision.

Willard Pellinen

Willard Pellinen  
McLeod County Surveyor  
License No. 9626

Date April 12, 1994.

OFFICE OF THE COUNTY RECORDER  
MCLEOD COUNTY, MINNESOTA.

I hereby certify that this document was filed in this office at 9 o'clock A.M. on the 20th day of April, 19 94.

Carmen Ostlie Mulder, County Recorder

By \_\_\_\_\_, Deputy

Document No. 259041

EAST QUARTER corner, Section 5, Township 115 North, Range 29 West*Certificate of Location of Government Corner*

September, 1856. Denis L. Langton of the General Land Office set a post in a wet marsh and raised a mound of earth, drove a charred stake and planted locust seeds at the corners of the mound.

November 4, 1899. E. L. Higgins, county surveyor, set the corner by proportionate measure between the section corners.

May 19, 1976. Dickman Knutson, county surveyor, dug for the corner, John Tupa from Hutchinson with a backhoe. They found a rotted wood stake. This was within 1.7 feet of being on the proration of the government distances between the section corners.

September 27, 1976. Knutson set a McLeod County cast iron monument at the location of the found wood stake and took reference ties.

The monument set by Knutson is accepted as marking the location of the quarter corner. It fits long standing occupation lines and it perpetuates the location of a found monument, the wood stake. The wood stake is probably the stake set by Higgins in 1899.

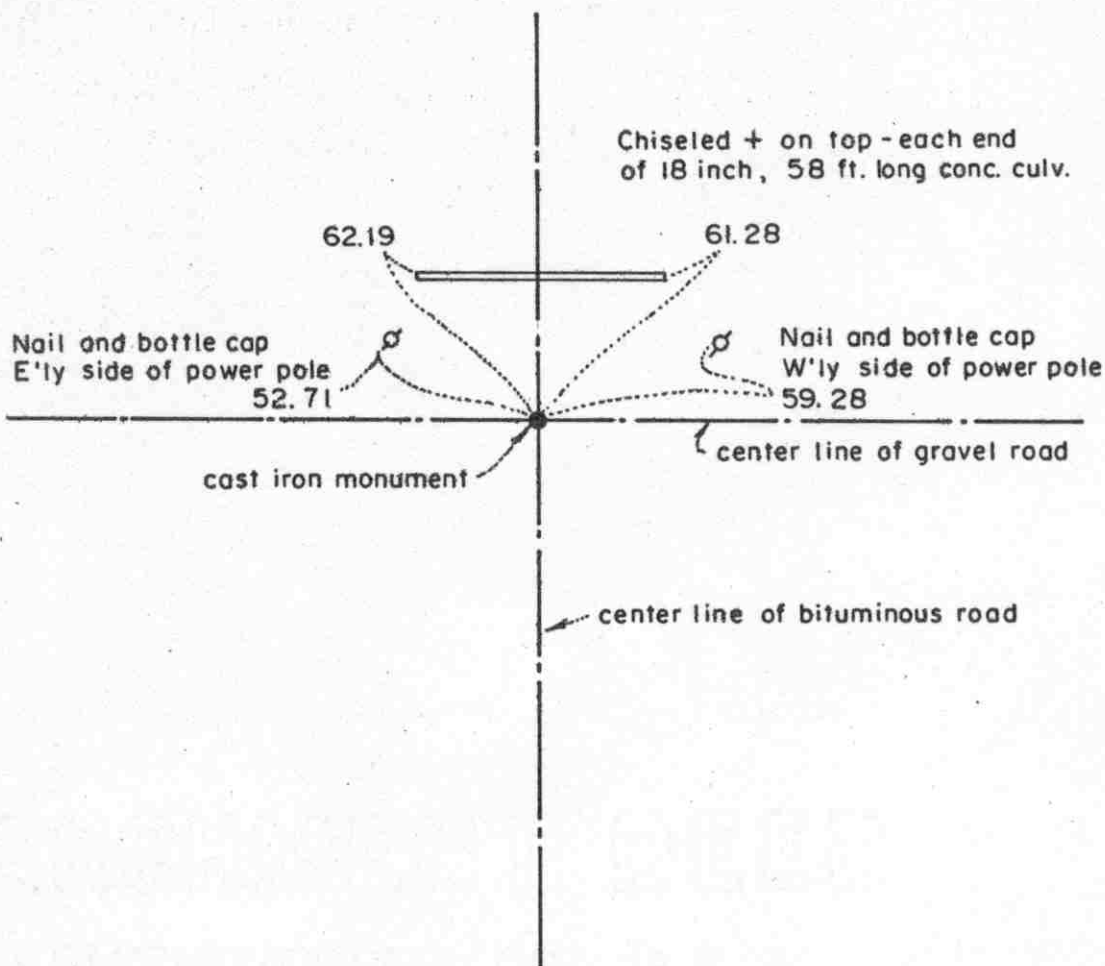
January 24, 1994. We found the monument in good condition and checked the reference ties.

NORTHEAST corner, Section 5, Township 115 North, Range 29 West

## Certificate of Location of Government Corner

## SKETCH OF REFERENCE TIES

(NO SCALE)

Statement of evidence relative to this corner location on sheet 2

I hereby certify that this document was prepared by me or under my direct supervision.

Willard Pellinen

Willard Pellinen  
McLeod County Surveyor  
License No. 9626

Date 2/9/89

OFFICE OF THE COUNTY RECORDER  
MCLEOD COUNTY, MINNESOTA.

I hereby certify that this document was filed in this office at 9 o'clock A.M. on the 15th day of Feb. 1989.

Carmen Patrie, County Recorder  
By \_\_\_\_\_, Deputy

Document No. 226953

NORTHEAST corner, Section 5, Township 115 North, Range 29 West

## *Certificate of Location of Government Corner*

This corner was established in July, 1855, by John Ryan of the Government Land Office. His notes state he set post, deposited charcoal, dug pits and trench and planted osage orange seeds at the corners of the mound.

In 1899, E.L.Higgins found a stake at this corner.

In August, 1970 we talked with R.A.Borchardt who had lived in the Southwest Quarter of Section 32, 116, 29 for over 60 years. He stated the center line center line intersection of the roads is the section corner.

On May 6, 1970, we found an iron pin down  $1\frac{1}{2}$  feet below the road surface. Not known who set this pin.

In August, 1970, we set a McLeod County cast iron monument at the center line- center line intersection at the location of the iron pin.

On April 14, 1988, we found the cast iron monument down 4 inches below the bituminous surface, in good condition. We took new reference ties.

We feel the found iron pin and the center line of the roads has perpetuated the true location of the section corner.

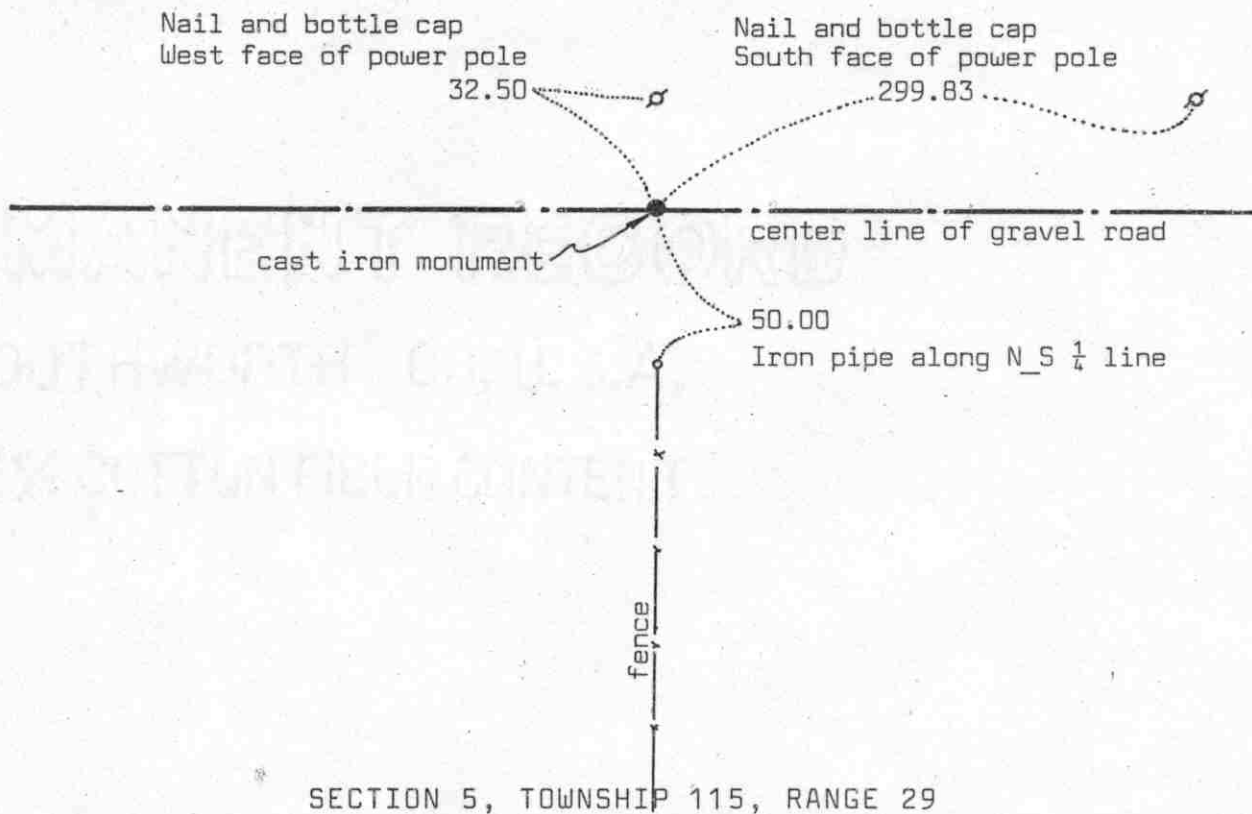
NORTH QUARTER corner, Section 5, Township 115 North, Range 29 West

# Certificate of Location of Government Corner

## SKETCH OF REFERENCE TIES

(NO SCALE)

SECTION 32, TOWNSHIP 116, RANGE 29



Statement of evidence relative to this corner location on sheet 2

I hereby certify that this document was prepared by me or under my direct supervision.

Willard Pellinen

Willard Pellinen  
McLeod County Surveyor  
License No. 9626

Date 4/3/90

OFFICE OF THE COUNTY RECORDER  
MCLEOD COUNTY, MINNESOTA.

I hereby certify that this document was filed in this office at 4 o'clock P.M. on the 2nd day of May, 1990.

Carmen Ostlie, County Recorder

By \_\_\_\_\_, Deputy

Document No. 233086

NORTH QUARTER corner, Section 5, Township 115 North, Range 29 West

## Certificate of Location of Government Corner

July, 1855. This corner was established by John Ryan of the General Land Office. He "set quarter section post, deposited charcoal, dug pits and trench, built mound and planted osage orange seeds at corners of mound."

December 11, 1923. County surveyor notes show an iron pipe at the corner and a distance of 2641.8 feet to the northwest corner of Section 5.

1970. R.A.Borchardt, 55 years old, in the southwest quarter of Section 32 all his life, said there is a stone with a wagon wheel over it at the corner. It was close to the center line of the road in line with a fence to the south.

1970. McCombs Knutson Associates, Dickman Knutson, county surveyor, dug for the corner, John Tupa from Hutchinson with a backhoe. They dug a hole 10 feet wide, 15 feet long and  $4\frac{1}{2}$  feet deep but found nothing. They set a cast iron monument on the center line of the road in line with a fence running south as per testimony by Mr. Borchardt and by Mrs Rannow, in the Northwest Quarter of Section 5, who also said the old fence has been accepted as the north - south quarter line of Section 5.

March 21, 1989. We found the monument in good condition but all the reference ties destroyed. We took new reference ties.

There being no evidence to the contrary, we have to accept the monument as marking the correct location of the quarter corner.

EAST QUARTER corner, Section 6, Township 115 North, Range 29 West

# Certificate of Location of Government Corner

SKETCH OF REFERENCE TIES  
(NO SCALE)

fence

field line ————— cast iron monument ————— field line —————  
x 0.5  
Steel fence post.

Statement of evidence relative to this corner location on sheet 2

I hereby certify that this document was prepared by me or under my direct supervision.

Willard Pellinen

Willard Pellinen  
McLeod County Surveyor  
License No. 9626

Date April 19, 1994.

OFFICE OF THE COUNTY RECORDER  
MCLEOD COUNTY, MINNESOTA.

I hereby certify that this document was filed in this office at 9 o'clock A. M. on the 10th day of May, 1994.

Carmen Hotliis Mulder, County Recorder

By \_\_\_\_\_, Deputy

Document No. 259451



EAST QUARTER          corner, Section 6, Township 115 North, Range 29 West*Certificate of Location of Government Corner*

September, 1856. D. L. Langton of the General Land Office established this corner. He set a post, raised mound, drove charred stake and planted locust seeds at the corners of the mound.

December 11, 1923. E. L. Higgins, land surveyor, located the quarter corner at the old fence corner.

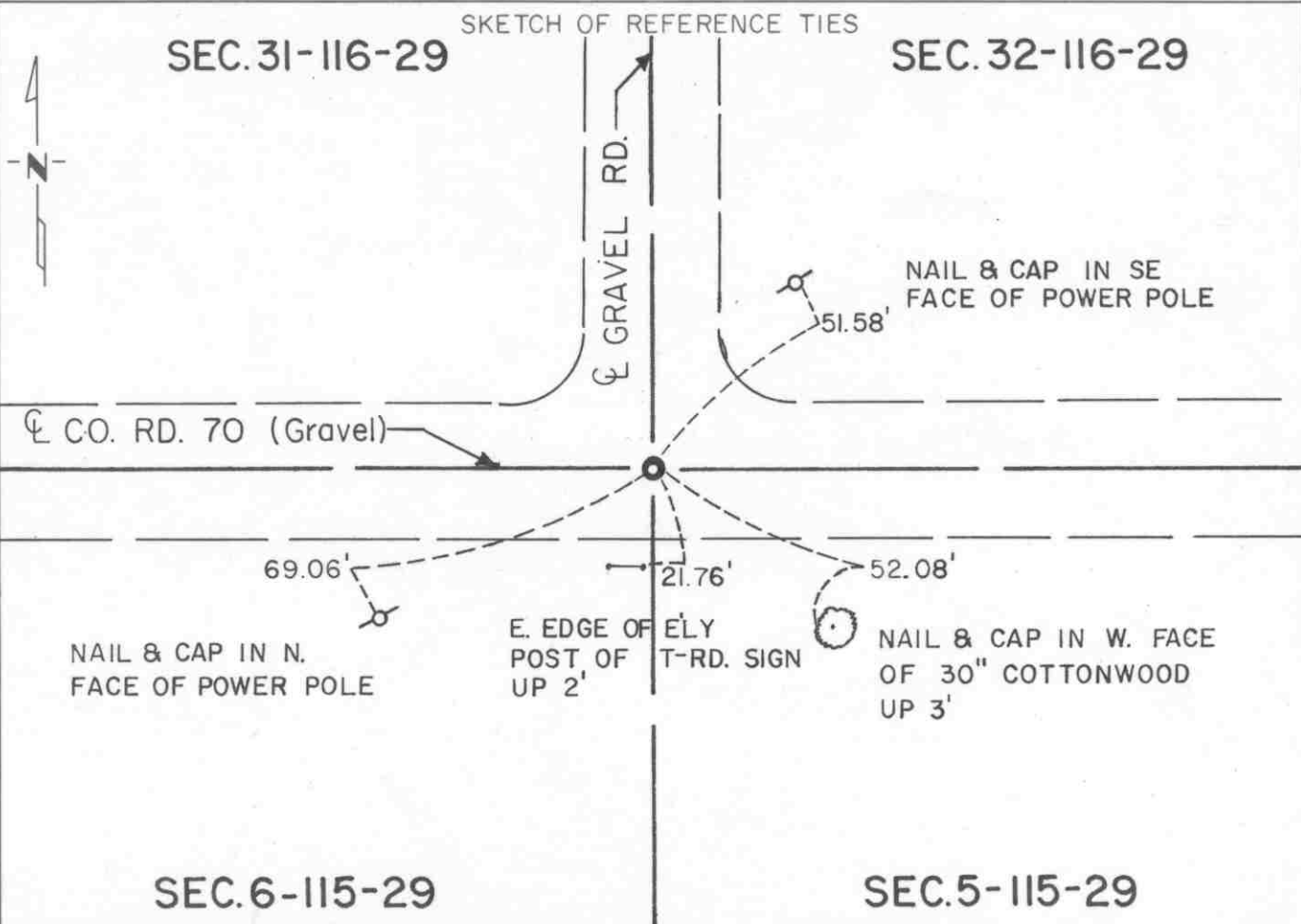
March 27, 1973. Dickman Knutson, county surveyor, set a cast iron monument at the location of a found old wood post and a stone. This was at the old fence intersection,, which has been accepted as the quarter corner by adjoining land owners.

This corner is within a foot of being at the lost position for the corner.

January 24, 1994. We found the monument in food condition and checked the ties.

**CERTIFICATE OF LOCATION OF GOVERNMENT CORNER**Northeast Corner of Section 6, Township 115 N, Range 29 W, 5th P.M.STATE OF MINNESOTA, County of McLeod

At the corner location shown on the sketch:

☒ On April 12, 1990 found a cast iron monument about 6" below road surface  
DATE☒ left monument as found, ☐ lowered monument, ☐ removed monument (explain)☐ On \_\_\_\_\_ placed a \_\_\_\_\_  
DATE

Statement of evidence relative to this corner location is on back of page.

I hereby certify that this document and the data contained herein was prepared by me or under my direct supervision.

Robert C. Jones 8-19-91  
SIGNATURE DATE

Registration No. 11864☒ Land Surveyor, ☐ Professional Engineer☐ County Surveyor, ☐ County Engineer

OFFICE OF THE COUNTY RECORDER

County of McLeodI hereby certify that this document was filed in the Co. Recorders office at 2 P. .M. on the 18th day of Sept A.D., 1991County Recorder Armen Dettie

By \_\_\_\_\_, Deputy

DOCUMENT NO. 240997

Statement of Evidence:

Northeast Corner Section 6, T 115 N, R 29 W

- 1855 - The original Public Land Survey of the Township Line was completed by John Ryan. A wood post was set over a deposit of charcoal in a dirt mound to mark the corner. Trenches and pits were dug to construct the mound and osage orange was planted at the corners of the mound.
- 1970 - Dickman Knutson, McLeod County Surveyor, found a stone and wood stake 3 1/2 feet below the road surface. The position of the stake and stone agreed with a 1923 survey distance to the east. A McLeod County cast iron monument was set over the stone and stake at the centerline of a road to the north and the centerline of an east/west road.
- 1989 - Willard Pellinen, McLeod County Surveyor, recovered the cast iron monument and set additional reference ties.
- 1990 - R. C. Jones, Registered Land Surveyor with Mn/DOT, found the cast iron monument about 6" below the road surface. All the 1989 reference ties were recovered.

The cast iron monument is accepted as the corner location because it perpetuates much older monumentation, fits an old survey distance, and fits long standing occupation lines.

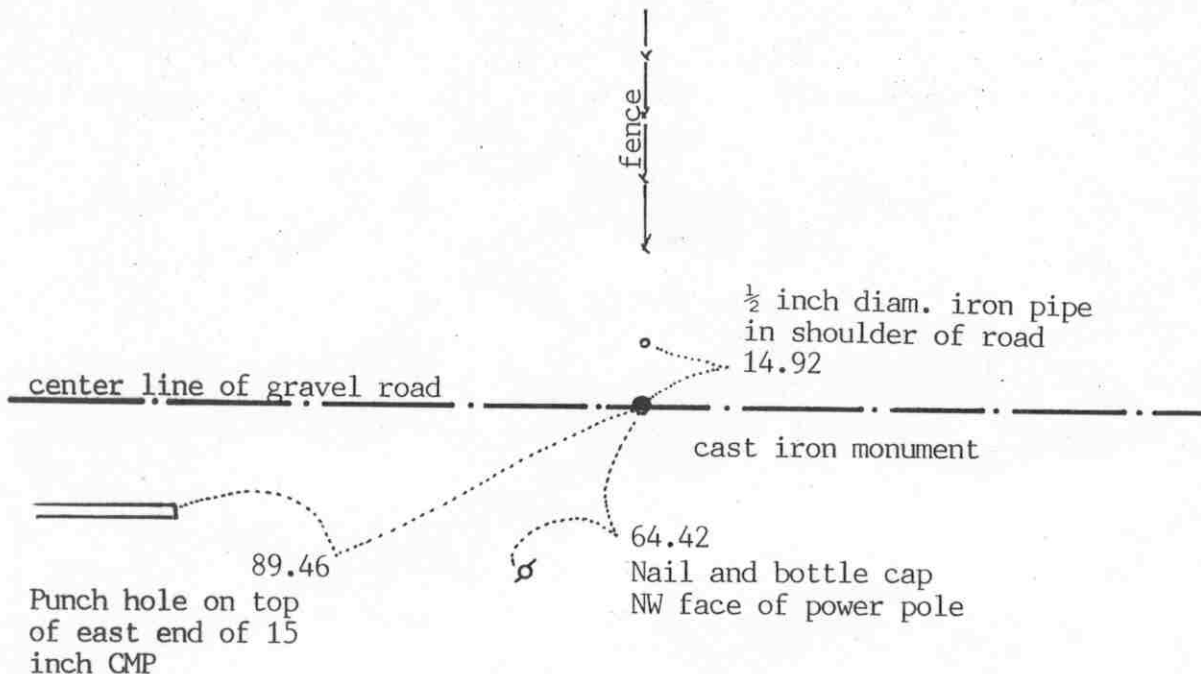
For addition information, contact the Mn/DOT Surveys Section at Willmar, Mn 56201.

NORTH QUARTER corner, Section 6, Township 115 North, Range 29 West

# Certificate of Location of Government Corner

## SKETCH OF REFERENCE TIES (NO SCALE)

SECTION 31



SECTION 6

Statement of evidence relative to this corner location on sheet 2

I hereby certify that this document was prepared by me or under my direct supervision.

Willard Pellinen

Willard Pellinen  
McLeod County Surveyor  
License No. 9626

Date October 16, 1991

OFFICE OF THE COUNTY RECORDER  
MCLEOD COUNTY, MINNESOTA.

I hereby certify that this document was filed in this office at 1 o'clock P. M. on the 21st day of Oct, 1991.

Carmen Ostlie, County Recorder

By \_\_\_\_\_, Deputy

Document No. 241593

## Certificate of Location of Government Corner

July, 1855. John Ryan of the General Land Office set a post, deposited charcoal, dug pits and trench, built mound and planted osage orange seeds at the corners of the mound.

December, 1954. County Highway Department field notes show the corner to be on the center line of the east-west road in line with a fence to the north.

1970. McCombs Knutson Associates (Dickman Knutson, county surveyor) dug for the corner, John Tupa from Hutchinson with a backhoe. They dug a hole 10 feet by 5 feet by 4½ feet deep but found no evidence of the quarter corner.

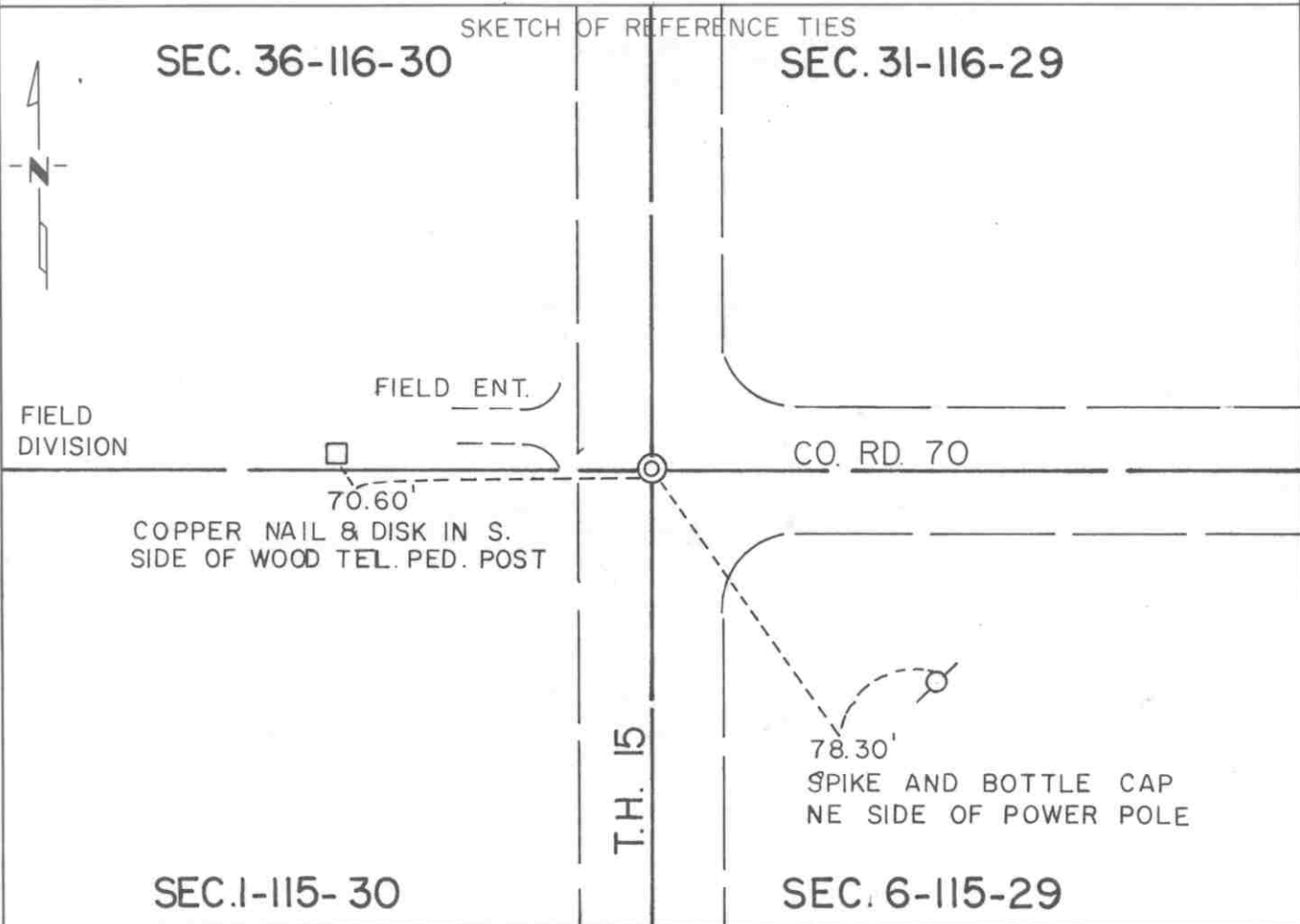
Knutson set a McLeod County cast iron monument in the center of the road in line with a fence to the north as per testimony from area residents.

July 23, 1990. We found the monument in good condition and took new reference ties.

There being no evidence to the contrary, we accept the monument as marking the quarter corner. It fits long standing occupation lines, the center line of the road and the fence running north.

**CERTIFICATE OF LOCATION OF GOVERNMENT CORNER**Northeast Corner of Section 1, Township 115 N, Range 30 W, 5th P.M.STATE OF MINNESOTA, County of McLeod

At the corner location shown on the sketch:

☒ On Apr. 12, 1990 found a railroad spike at the surface of the highway  
DATE☒ left monument as found, ☐ lowered monument, ☐ removed monument (explain)☐ On \_\_\_\_\_ placed a \_\_\_\_\_  
DATE

Statement of evidence relative to this corner location is on back of page.

I hereby certify that this document and the data contained herein was prepared by me or under my direct supervision.

Robert Jones 8-19-91  
SIGNATURE DATE

Registration No. 11864☒ Land Surveyor, ☐ Professional Engineer☐ County Surveyor, ☐ County Engineer

OFFICE OF THE COUNTY RECORDER

County of McLeodI hereby certify that this document was filed in the Co. Recorders office at 2 P.M. on the 18th day of Sep A.D., 1991County Recorder Armen Bellie

By \_\_\_\_\_, Deputy

DOCUMENT NO. 241015

Statement of Evidence:

Northeast Corner Section 1, T 115 N, R 30 W

- 1855 - The original Public Land Survey of the Township Line was completed by John Ryan. A wood post was set in a dirt mound over a deposit of charcoal to mark the corner. Trenches and pits were dug as per instructions to build the mound. Osage orange was planted at the corners of the mound.
- 1895 - I. C. Christlieb, McLeod County Surveyor, set an iron monument to mark the corner.
- 1941 - The Minnesota Highway Department right of way map shows the corner to be located at T.H. 15 engineer's station P.O.T. 962+59.5. It was in line with the centerline of a road to the east and 2 1/2 feet south of a fence line to the west. It is not known whether a monument was found or not.
- 1942 - It appears that all physical evidence of the corner was destroyed when T.H. 15 was graded.
- 1969 - The McLeod County Surveyor measured the east line of Section 1 and found an iron pipe at the centerline of T.H. 15 and the centerline of a county road to the east. The distance from the pipe to the southeast corner of the section was within 1 foot of Christlieb's 1895 survey distance. Reference ties were made to the iron pipe at that time.
- 1990 - R. C. Jones, Registered Land Surveyor with Mn/DOT, found a railroad spike at the road surface at T.H. 15 engineer's station equation P.I. 962+61.00 = P.O.T. 962+58.68.

The railroad spike is accepted as the corner position because it nearly matches the location shown on the highway right of way map and it is in line with the centerline of a county highway to the east.

For additional information, contact the Mn/DOT Surveys Section at Willmar, Mn 56201.

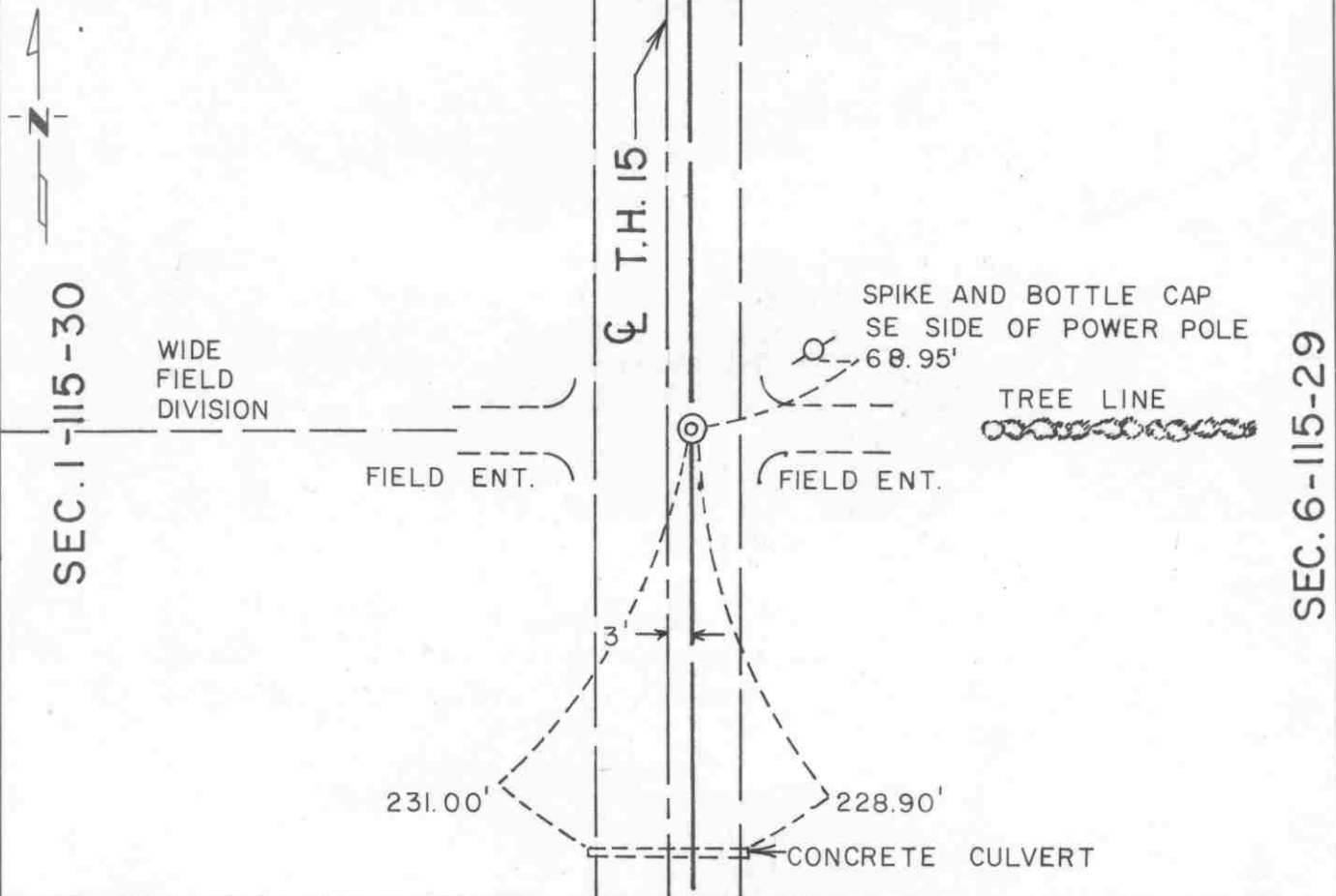
# CERTIFICATE OF LOCATION OF GOVERNMENT CORNER

East Quarter \_\_\_\_\_ Corner of Section 1, Township 115 N, Range 30 W, 5th P.M.  
 STATE OF MINNESOTA, County of McLeod

At the corner location shown on the sketch:

- ☒ On Apr. 13, 1990 found a nail and a disc at the road surface about 3 feet  
DATE east of the centerline of T.H. 15  
☒ left monument as found, ☐ lowered monument, ☐ removed monument (explain)  
☐ On \_\_\_\_\_ placed a \_\_\_\_\_  
DATE

SKETCH OF REFERENCE TIES



Statement of evidence relative to this corner location is on back of page.

I hereby certify that this document and the data contained herein was prepared by me or under my direct supervision.

Robert G. Jones 8-19-91  
SIGNATURE DATE

Registration No. 11864

- ☒ Land Surveyor, ☐ Professional Engineer  
☐ County Surveyor, ☐ County Engineer

OFFICE OF THE COUNTY RECORDER

County of McLeod

I hereby certify that this document was filed in the Co. Recorders office at 2 P .M. on the 18th day of Sep A.D., 1991

County Recorder Carment Stlie

By \_\_\_\_\_, Deputy

DOCUMENT NO. 241016



Statement of Evidence:

East Quarter Corner Section 1, T 115 N, R 30 W

- 1855 - The original Public Land Survey of the Township Line was completed by John Ryan. A wood post was set in a dirt mound over a deposit of charcoal to mark the corner. Trenches and pits were dug as per instructions to build the mound. Osage orange was planted at the corners of the mound.
- 1895 - I. C. Christleib, McLeod County Surveyor, set an iron monument to mark the corner.
- 1941 - The Minnesota Highway Department right of way map shows that a 1" by 2" iron monument was found at the corner. It was located 3.00 feet east of T.H. 15 engineer's station P.O.T. 935+96.7 about 2.5 feet north of the centerline of a road to the west and a fence line to the east.
- 1942 - All physical evidence of the corner was probably destroyed when T.H. 15 was graded.
- 1969 - The McLeod County Surveyor found a spike at the centerline of T.H. 15 which was within one foot of being midway between the section corners. Being that the right of way map shows that the corner was found 3 feet east of the centerline, a 1" diameter iron pipe was set 3.00 feet east of the found spike. Reference ties were set.
- 1989 - Willard Pellinen, McLeod County Surveyor, found a nail and disc marking the corner. The reference ties were checked.
- 1991 - R. C. Jones, Registered Land Surveyor with Mn/DOT, found a nail and disc marking the corner at the road surface. Two of the reference ties that existed in 1989 were gone. No additional ties were set.

The nail and disc is accepted as the location of the corner because it is 3.82 feet east of T.H. 15 P.O.T. 935+99.44, it is within 0.5 feet of being midway between section corners, and it is in line with a field division west and a tree line east.

For additional information, contact the Mn/DOT Surveys Section at Willmar, Mn 56201.